
Windows XP
CS-150L
Computing for Business Students

Instructor:

Joel Castellanos

e-mail: joel@unm.edu

Web: <http://cs.unm.edu/~joel/>

Office: Farris Engineering
Center (FEC) room 321



8/27/2009

Windows XP – Gotta Love it



- "Why should I press the Start button to turn the computer off ?" — *A Windows user.*



- "Computer are like air conditioners: they stop working when you open windows."

8/27/2009

2

GUI (Graphical User Interface)

The image shows a screenshot of the 'Insert Table' dialog box in a software application. The dialog box is titled 'Insert Table' and has a close button (X) in the top right corner. It contains several sections and controls:

- Table size:** Includes 'Number of columns' (set to 2) and 'Number of rows' (set to 6), both with spinners.
- AutoFit behavior:** Includes three radio buttons: 'Fixed column width' (selected), 'AutoFit to contents', and 'AutoFit to window'. There is also an 'Auto' spinner.
- Check Boxes:** Includes 'Add default table border', 'Remember AutoFit Behavior for new tables', and 'Remember dimensions for new tables'.
- Buttons:** Includes 'OK' and 'Cancel' buttons at the bottom.

Annotations with arrows point to various elements:

- Dialog Box:** Points to the title bar and close button.
- Edit Field:** Points to the 'Number of columns' and 'Number of rows' spinners.
- Label:** Points to the 'Number of rows' label.
- Radio Buttons:** Points to the 'AutoFit to contents' radio button.
- Inactive Edit Field:** Points to the 'Auto' spinner.
- Check Boxes:** Points to the 'Remember AutoFit Behavior for new tables' checkbox.
- Button:** Points to the 'Cancel' button.

8/27/2009 3

Windows XP's Window GUI

The image shows a screenshot of a Windows XP Explorer window. The window title is 'C:\Joel\CS-150\Lectures'. The menu bar includes 'File', 'Edit', 'View', 'Favorites', 'Tools', and 'Help'. The address bar shows 'C:\Joel\CS-150\Lectures'. The main pane displays a list of files and folders:

- Fall 2008 (Folder)
- cs150.html (HTML file)
- CS-150-Lecture-... 1.ppt (PowerPoint file)
- CS-150-Lecture... (PowerPoint file)
- CS-150-Lecture... (PowerPoint file)
- CS-150-Syllabu... (Word document)

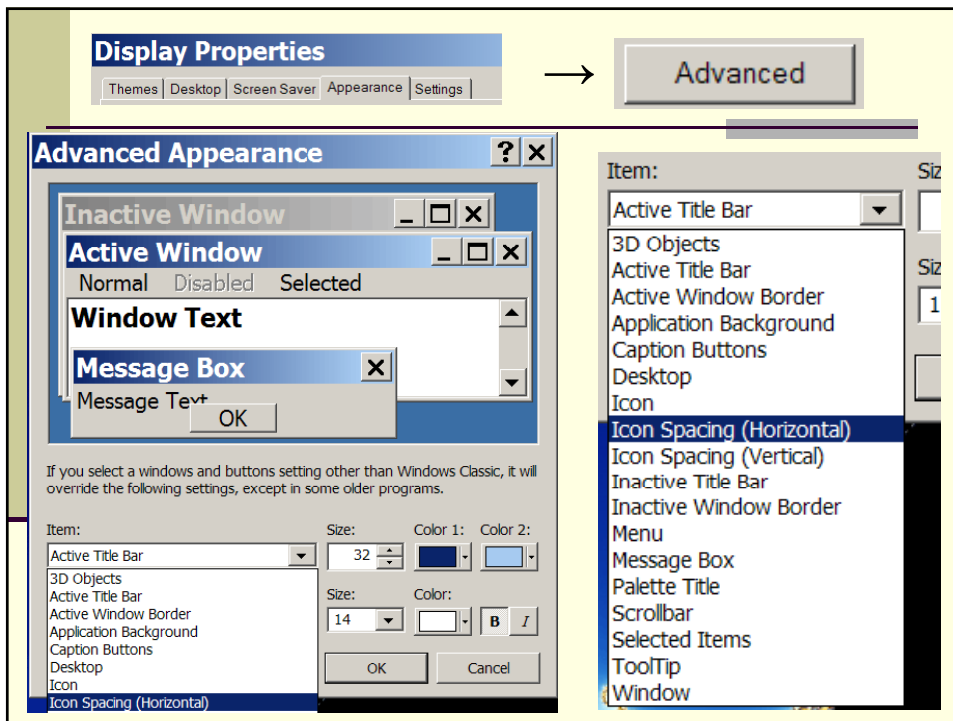
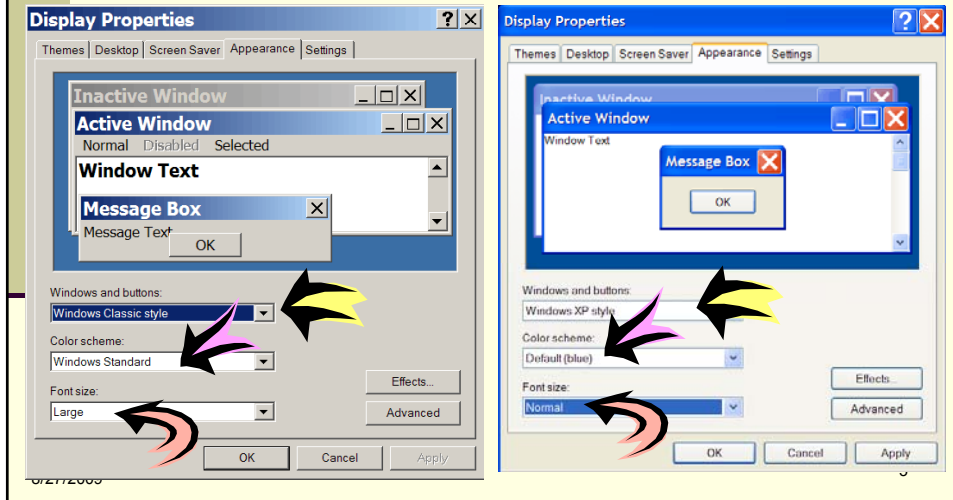
Annotations with arrows point to various elements:

- Maximize:** Points to the maximize button in the window title bar.
- Minimize:** Points to the minimize button in the window title bar.
- Close:** Points to the close button in the window title bar.
- Change Size:** Points to the bottom-right corner of the window frame.

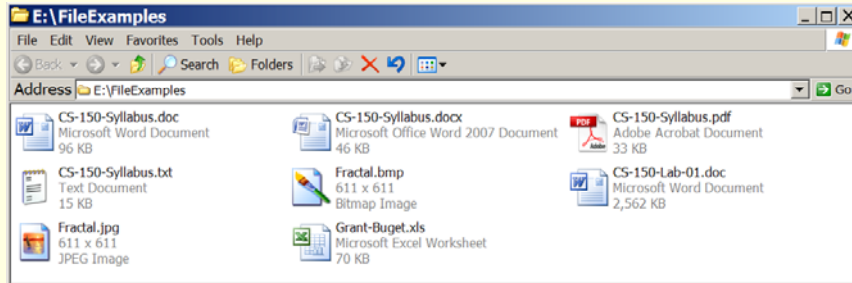
8/27/2009 4

Settings → Control Panel → Display

"Windows and Buttons" & "Font size"



File Extension Examples

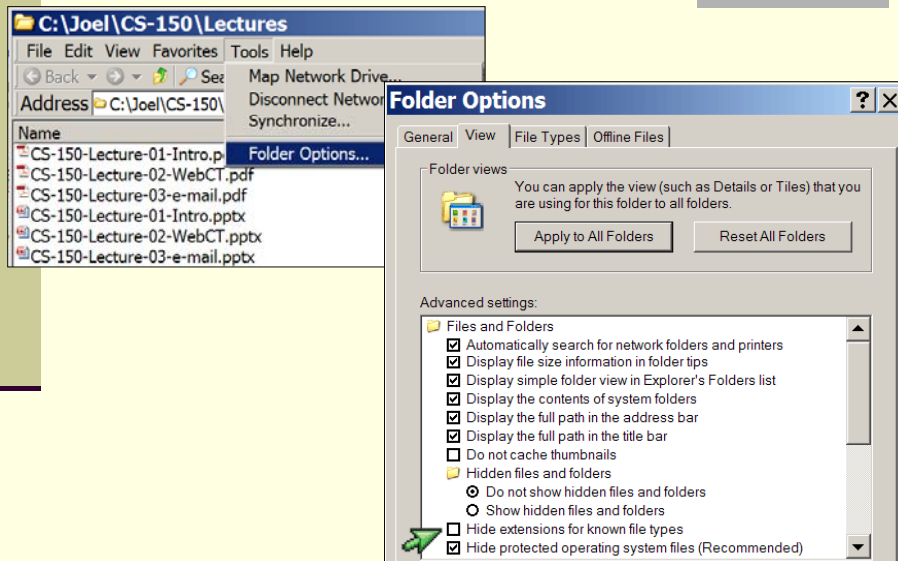


- .jpg: JPEG Image
- .doc: Microsoft Word 97-2003 Document
- .docx: Microsoft Word 2007 Document
- .pdf: Adobe Acrobat Document

8/27/2009

7

Hide / Show Extensions



8/27/2009